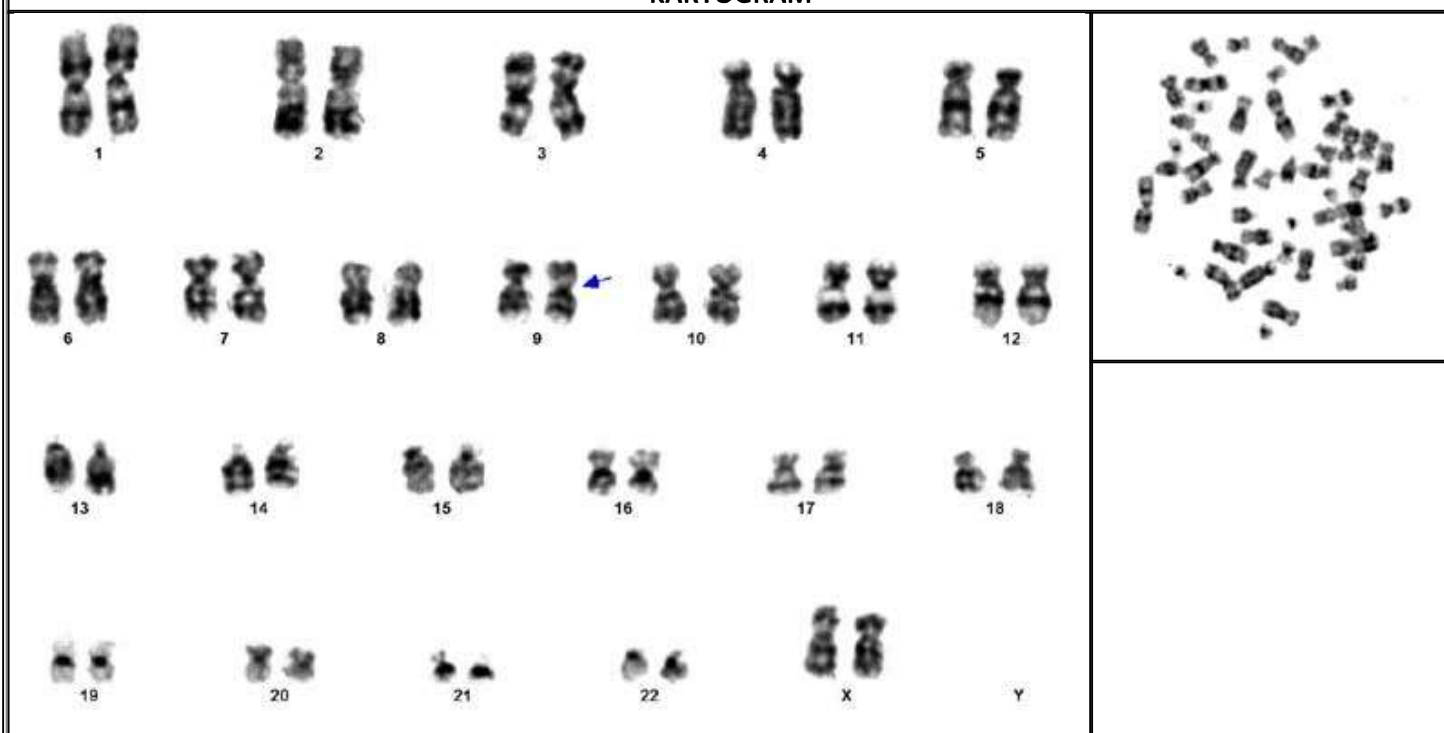


DEPARTMENT OF CYTOGENETICS

KARYOGRAM



REPORT: 46,XX,inv(9)(p11q13) female karyotype

GENETIC COUNSELOR'S NOTE: Pericentric inversion in the heterochromatic region of chromosome 9 (p11q13) has been recognized as a normal variant, generally without phenotypic effect.

* Disclaimer-There exists a possibility of errors in reporting due to factors beyond the control of the laboratory. This report may not be copied or reproduced, except in its totality. All reports are strictly for the use of medical practitioners and are not medical diagnosis as such.

***** End Of Report *****