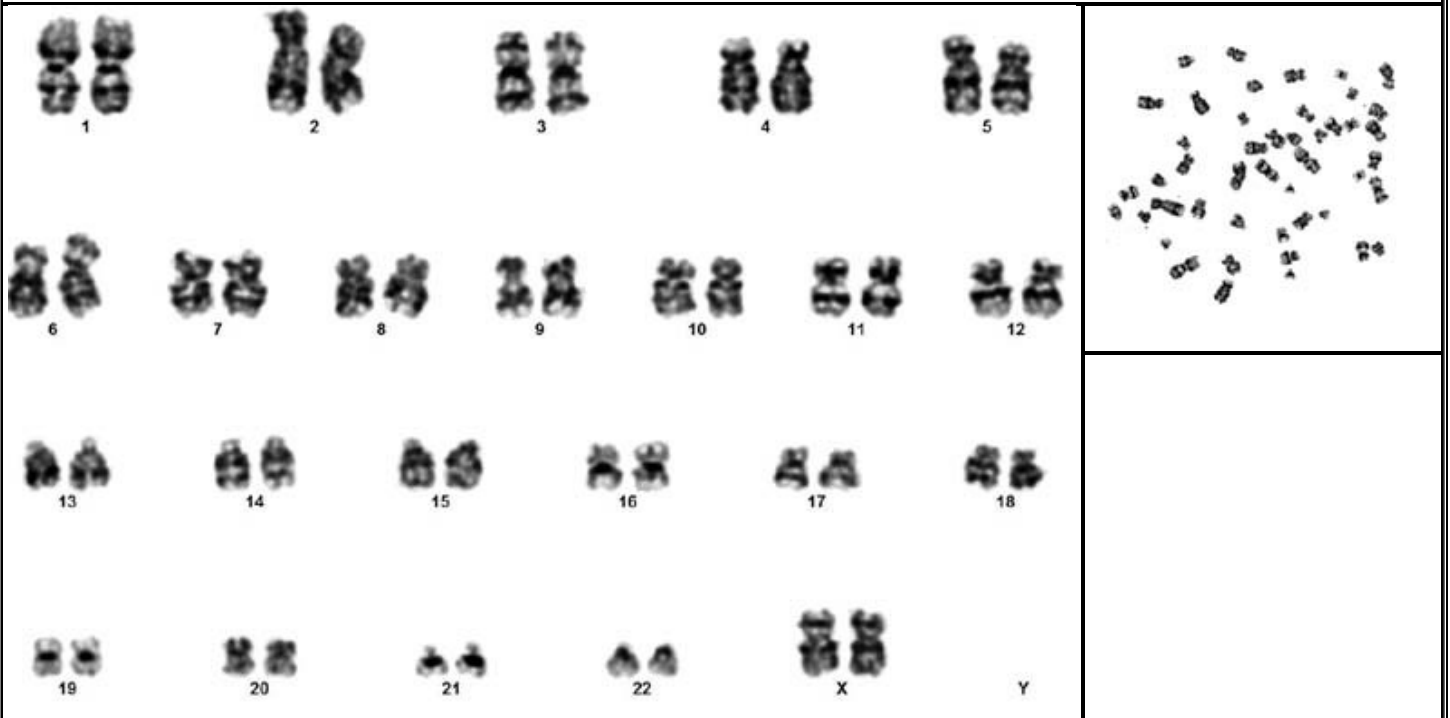


DEPARTMENT OF CYTOGENETICS

KARYOGRAM



REPORT: 46,XX normal female karyotype.

GENETIC COUNSELOR'S NOTE:

To be clinically correlated.

The patient's sample collected was of poor quality so did not show very healthy growth in culture. Hence the report is generated on an abbreviated sample.

* **Disclaimer**-There exists a possibility of errors in reporting due to factors beyond the control of the laboratory. This report may not be copied or reproduced, except in its totality.All reports are strictly for the use of medical practitioners and are not medical diagnosis as such.

*** End Of Report ***