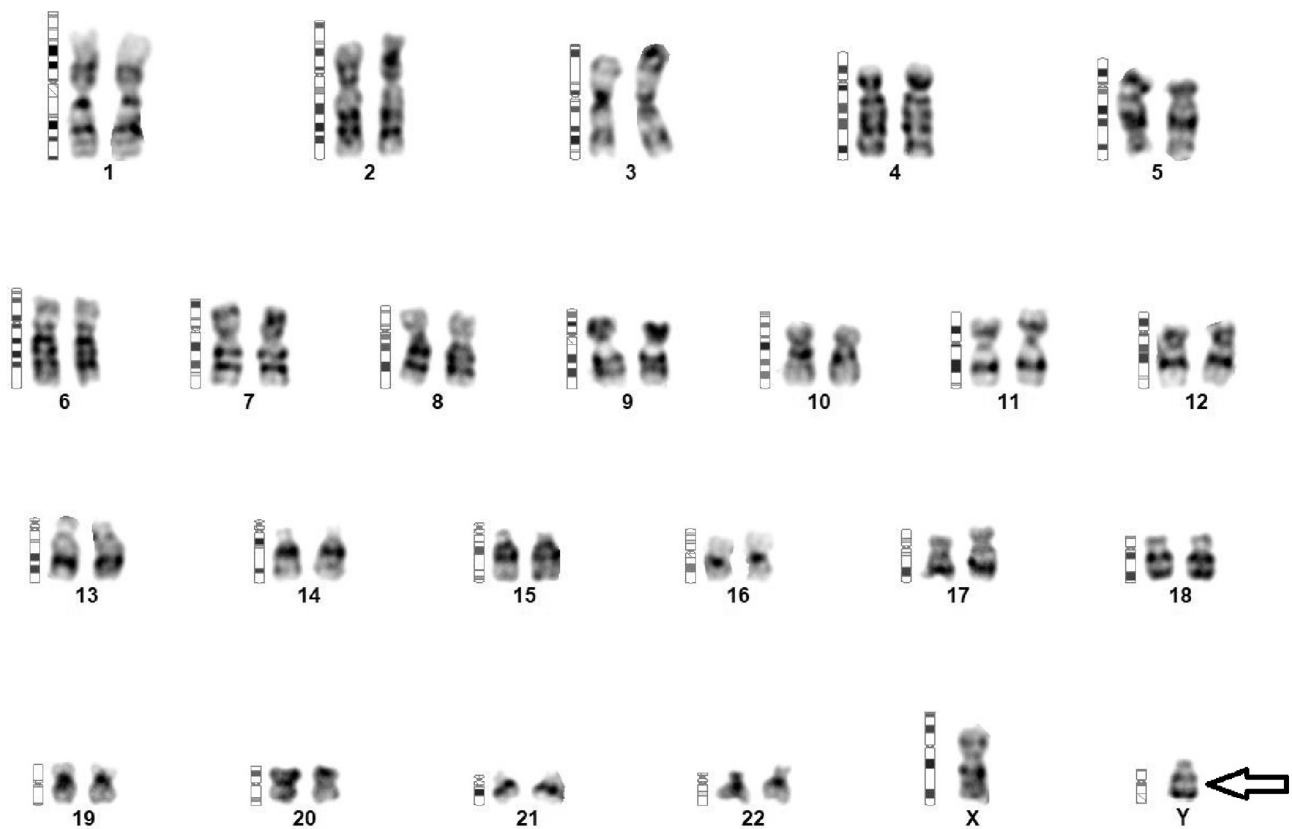


## KARYOTYPING IMAGE



### Karyotype - ISCN(2020)

46,XYqh+

### Interpretation

Chromosome analysis of PHA stimulated Peripheral Blood lymphocytes revealed a male karyotype with the presence of an increase in length of constitutive heterochromatin on chromosome Y. The role of heterochromatic variations in length, in couples investigated for sub-fertility is debatable. However, some of the findings indicate towards a probable role and are considered to be