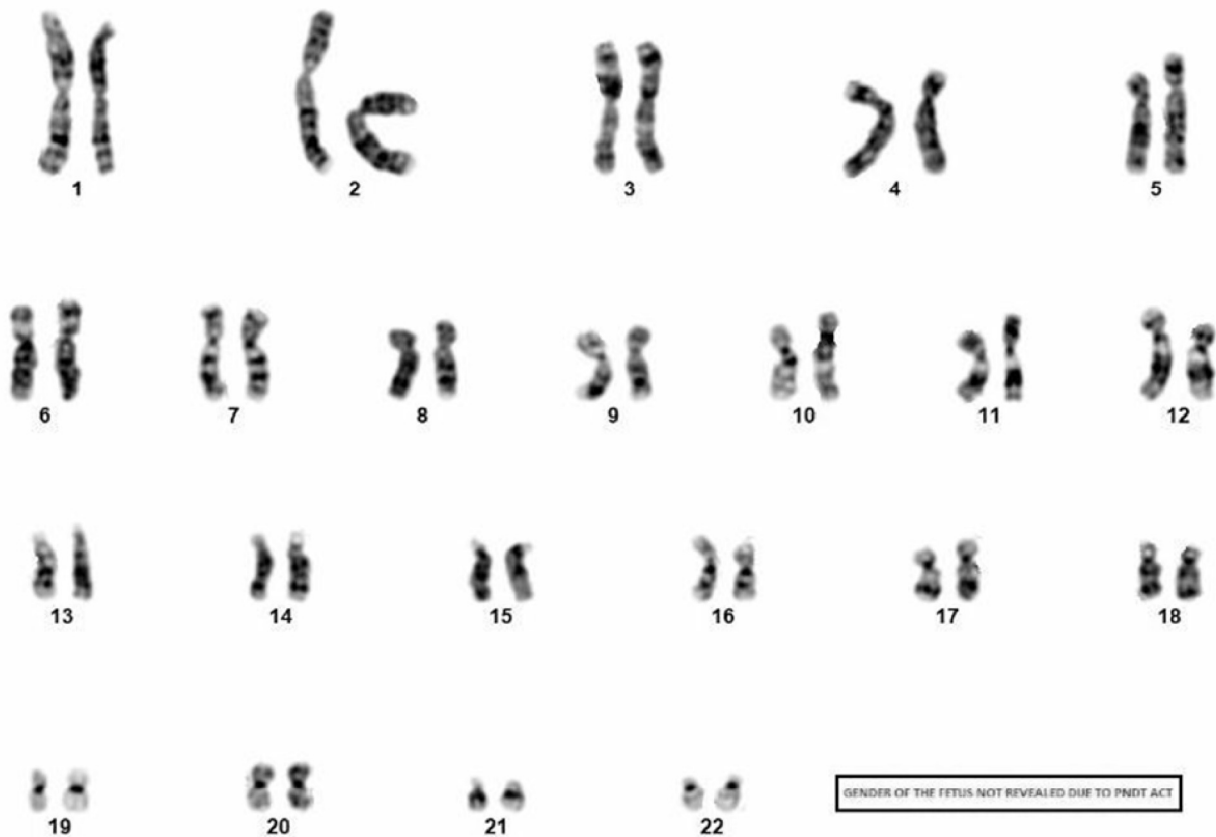


## KARYOTYPING IMAGE



### Karyotype - ISCN(2020)

46,X?

### Interpretation

Chromosome analysis of long term cultured POC cells revealed a normal chromosomal complement from multiple cultures of POC cells. There was no evidence of any chromosomal abnormality within the limits of the current technology. However, the possibility of the presence of sub microscopic or cryptic rearrangements cannot be ruled out.