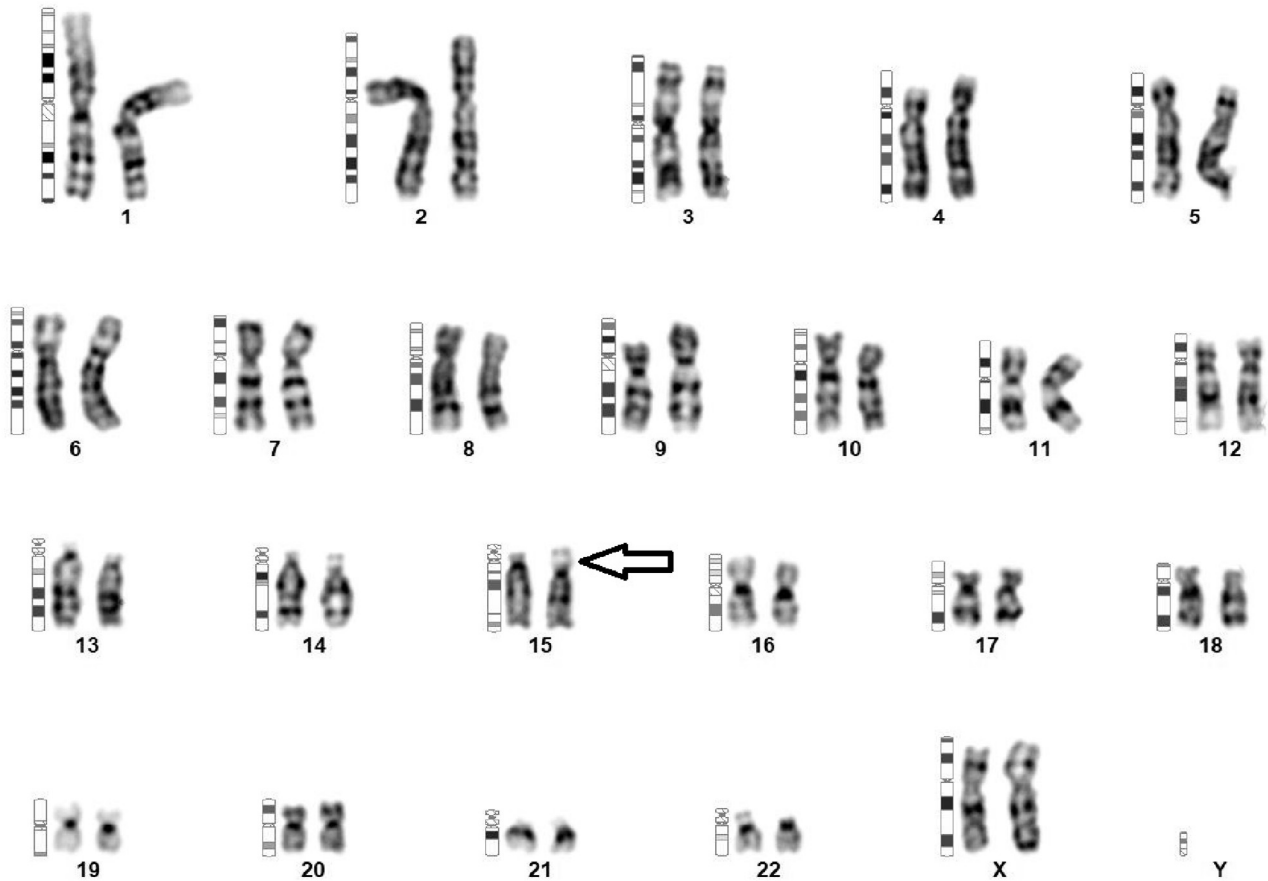


KARYOTYPING IMAGE



Karyotype - ISCN(2020)

46,XX,15ps+

Interpretation

Chromosomal analysis of PHA stimulated Peripheral Blood lymphocytes revealed a female chromosomal complement with the presence of an increase in length of the satellite on the short arm of one of the chromosomes 15. This heteromorphism is