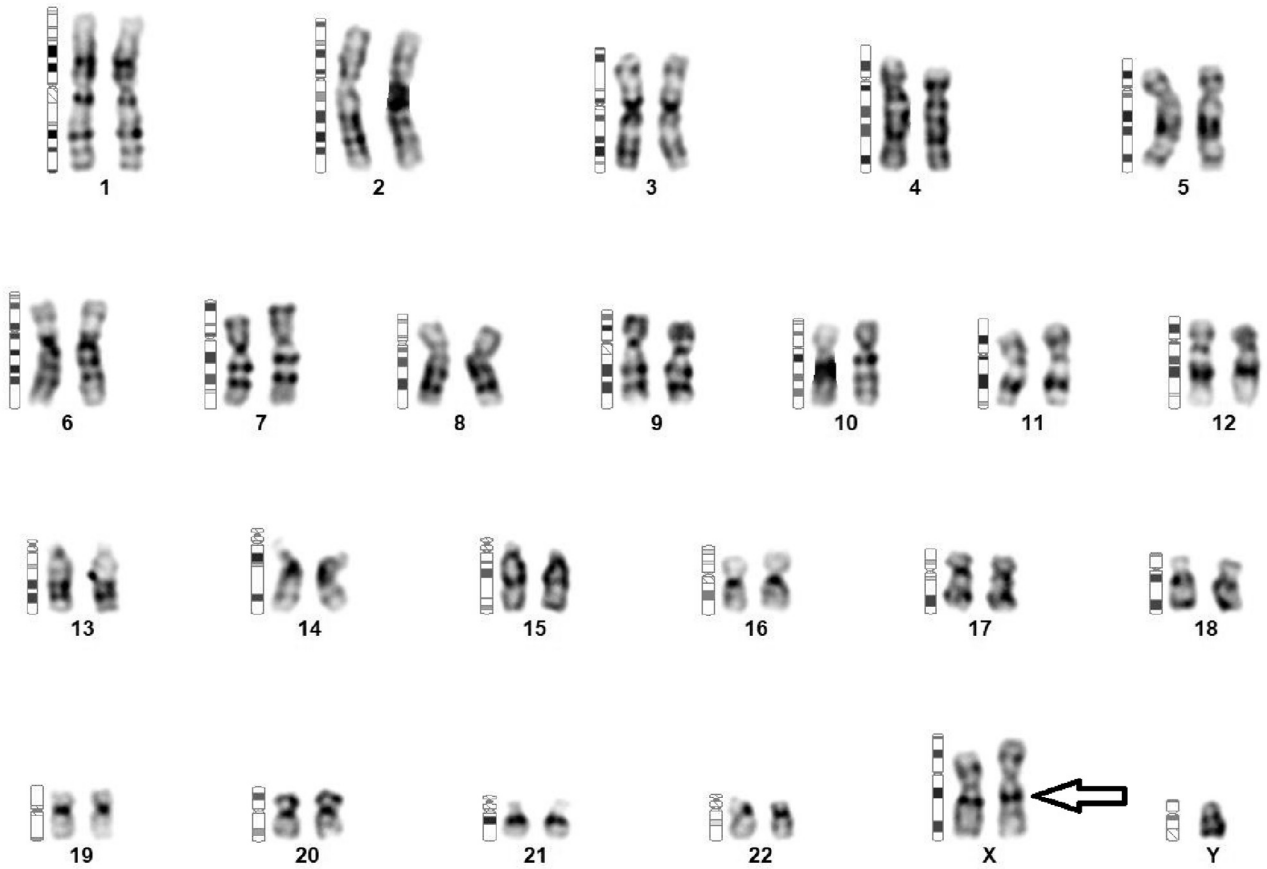


## KARYOTYPING IMAGE



### Karyotype - ISCN(2020)

47,XXY

### Interpretation

Chromosome analysis of PHA stimulated Peripheral Blood lymphocytes revealed a male chromosome complement with the presence of an additional copy of X chromosome in all cells studied as XXY. This karyotype is indicative of Klinefelter syndrome. Kindly correlate clinically to establish a phenotype-genotype correlation.